



# SENSO

## LOCK-PLUS

### STRONG

- Locking groove
- Excellent grip of planks

### RESISTANT

- Resistant to shocks, heels and scratches
- Wear layer + protective varnish
- Suitable for heavy traffic areas

### REALISTIC

- Textured, matt surface
- Chamfering on 4 sides

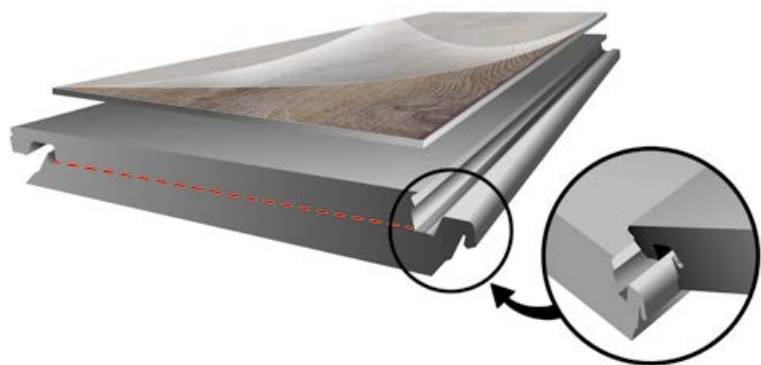
### CAN BE LAID DIRECTLY ON TILED FLOORS

(If joints < 4 mm)

- Planks 5 mm thickness

### SUITABLE FOR WET ROOMS

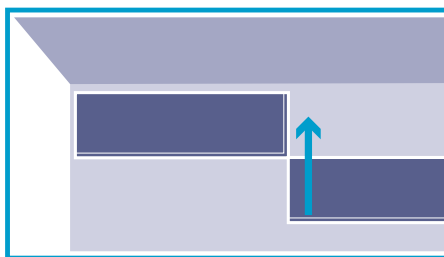
- Anti-slip



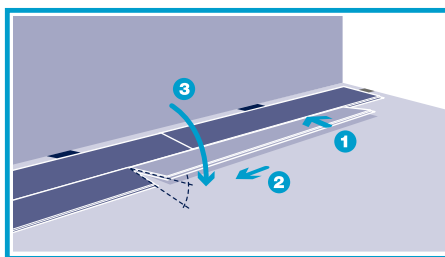
## LAYING

### QUICK & EASY

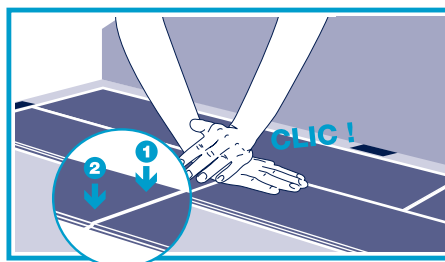
- Vertical interlock on the short edge
- Cut with a cutter
- Adhesive-free installation
- 12 m<sup>2</sup> per hour



For the 1st row, start in a corner.  
Gently slide in the short edges.



1. Assemble the long edges by tilting the plank
2. Slide in until the short edges are on top of each other
3. Snap in place



Snap in place... and it's laid!

**Tip:** finish off with a tap of the hammer if necessary.

Cleaning & care – see page 181

Laying video

